

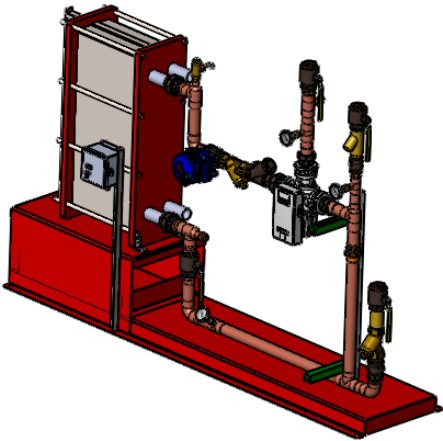
APPROVAL

BY: \_\_\_\_\_ DATE: \_\_\_\_\_

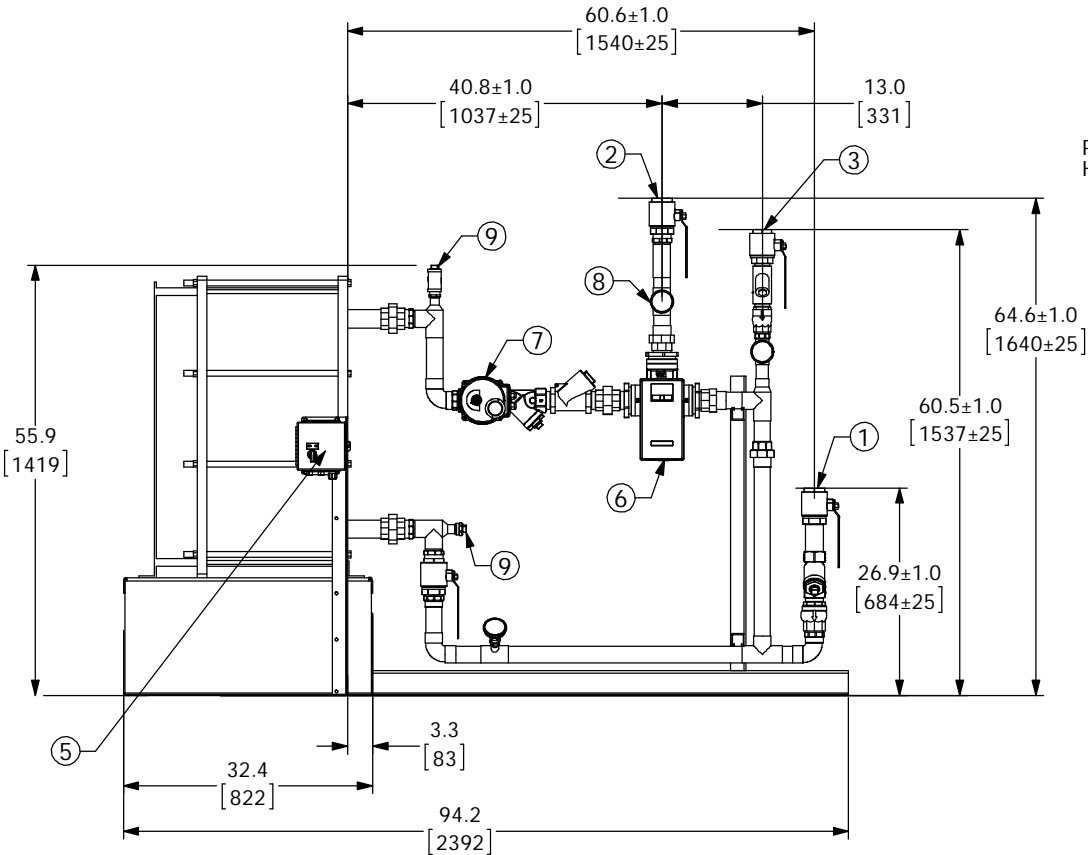
☐ APPROVED, PROCEED WITH FABRICATION

☐ APPROVED AS NOTED, PROCEED WITH FABRICATION IN ACCORDANCE WITH COMMENTS

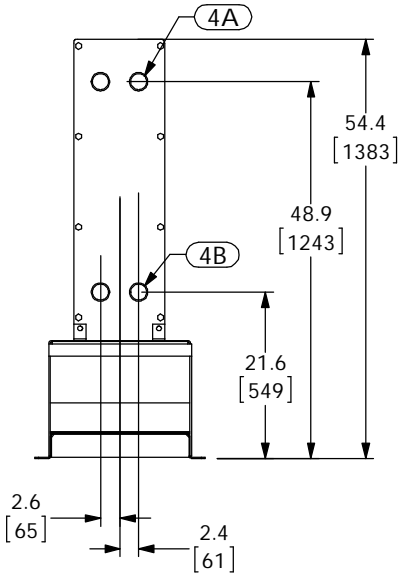
☐ DISAPPROVED, DO NOT FABRICATE



DIGITAL FLO BOILER WATER/WATER PLATE & FRAME HEAT EXCHANGER DOUBLE WALL



PIPING AND COMPONENTS  
HIDDEN TO SHOW CONNECTIONS



PROJECT NAME :		
TAG :		
ITEM	DESCRIPTION	CONNECTION
1	COLD WATER INLET	2" NPT
2	MIXED WATER OUTLET	2" NPT
3	RECIRC WATER INLET	1-1/2" NPT
4A	PRIMARY(BOILER) INLET	2" NPT
4B	PRIMARY(BOILER) OUTLET	2" NPT
5	ELECTRICAL PANEL	110VAC @ 0.7A
6	DRV80	3" NPT
7	N.C. ACTUATED BALL VALVE SAFETY SHUT OFF	2" NPT
8	THERMOMETER (3)	
9	CIP CONNECTION (2)	1" NPT
10	SRV(PRESSURE) PIPE TO DRAIN	1" NPT
11	SRV(CONNECTION FOR USER SUPPLIED T&P)	1" NPT
ITEM		MATERIAL
PIPING		COPPER TYPE "L"
EXCHANGER PLATE MATL.		T316L SS
EXCHANGER GASKET MATL.		NITRILE

- NOTE(S):
- ALL DIMENSIONS +/- .5[13] UNLESS OTHERWISE SHOWN.
  - COMPLETE ASSEMBLY LEAD FREE COMPLIANT - THE WETTED SURFACE OF THIS PRODUCT CONTACTED BY CONSUMABLE WATER CONTAINS LESS THAN ONE QUARTER OF ONE PERCENT (0.25%) OF LEAD BY WEIGHT.
  - PACKAGE INCLUDES ALL REQUIRED INLET CHECK VALVES AND STRAINERS ON DOMESTIC SIDE.
  - DRV, SAFETY SHUT OFF AND ELECTRICAL PANEL ARE PREWIRED TO PROVIDE A SINGLE ELECTRICAL LANDING POINT AT THE PANEL.

DO NOT SCALE DRAWING  
TOLERANCES UNLESS OTHERWISE SPECIFIED  
DIMENSIONING  
ENGLISH (mm)  
FRACTIONAL ± 1/64  
ANGULAR ± 2  
DECIMAL .XXX ± .0005  
.XXX ± .005  
.XX ± .015  
.X ± .3

NAME  
CFG  
DATE  
02/26/2013  
MATERIAL

RELEASED  
SALES

ARMSTRONG INTERNATIONAL  
Copyright © 2010 ARMSTRONG INTERNATIONAL, INC.  
DF65WDW50 2 NPT 2 NPT 1-1/2 NPT CPR  
CONFIG# (C-XXXXXX)  
SHEET 1 OF 1  
DWG. D5XXXXX